

HİDROLİK SİLİNDİR (CETOP) HYDRAULIC CYLINDER (CETOP)

CYLINDERS SİLİNDİRLER



(CETOP R58H STANDARDI)
(R58H Standard)

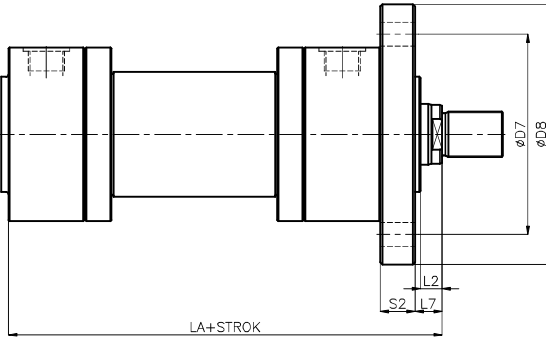
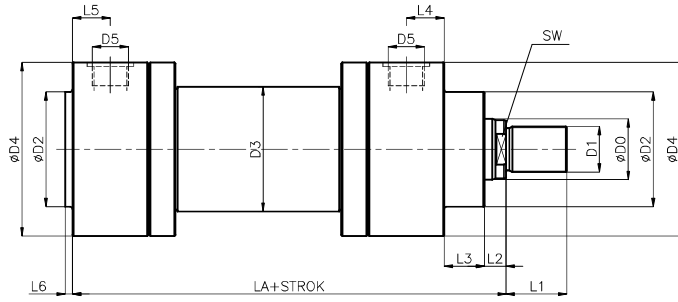
NHS - . . . - . . . - . . . - . . . - . . .

Silindir Çapı Ø Piston Diameter Ø
50
63
80
100
125
160
200

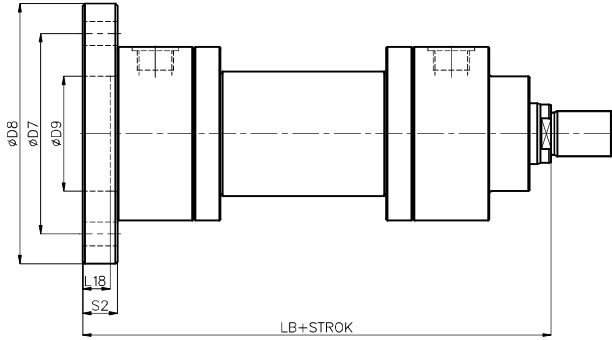
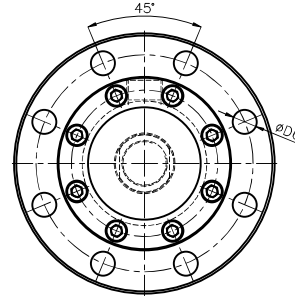
Standart Stoklar Standard Strokes mm
100
200
300
400
500

Bağlantı Şekilleri / Mountings	
ÖFB	Ön Flanş Bağlantı / Front flange mounting
AFB	Arka Flanş Bağlantı / Rear flange mounting
AEB	Arka Eklem Bağlantı / Rear swivel flange mounting
AEBK	Küresel Arka Eklem Bağlantı Rear swivel flange mounting with spherical bearing
ÖEB	Ön Eklem Bağlantı / Piston rod swivel mounting
ÖEBK	Küresel Ön Eklem Bağlantı Piston rod swivel mounting with spherical bearing
OEB	Orta Eklem Bağlantı / Central trunnion mounting
AB	Ayak Bağlantı / Foot mounting

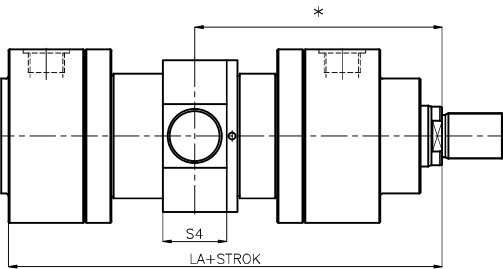
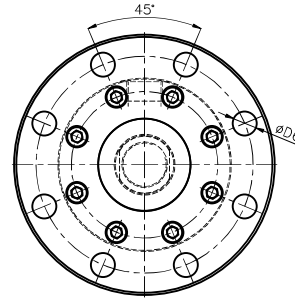
RH	Piston Mili Sertleştirilmiş ve Krom Kaplı Hardened and chrome plated piston rod
RS	Piston Mili Paslanmaz Stainless steel piston rod
	Ck 45 Krom Kaplı Ck 45 chrome plated piston rod
	Nitril Sızdırmazlık Elemanı NBR Seal
SV	Viton Sızdırmazlık Elemanı Viton Seal



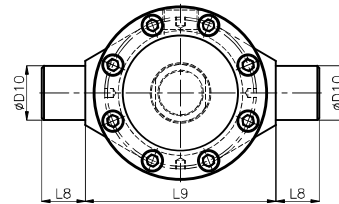
Ön flanş bağlantı
Front flange mounting



Arka flanş bağlantı
Rear flange mounting



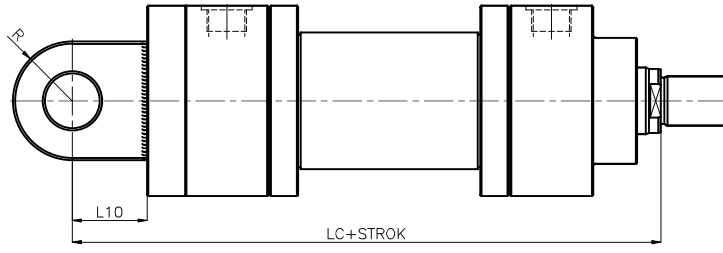
Orta eklem bağlantı
Trunnion mounting



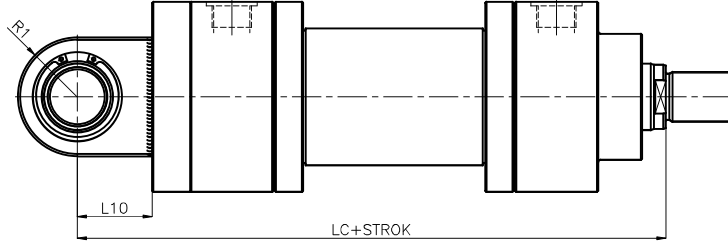
* Bu ölçü müşteri isteğine ve stroğa bağlı olarak değişir.

* This dimension will change according to the stroke and customer needs.

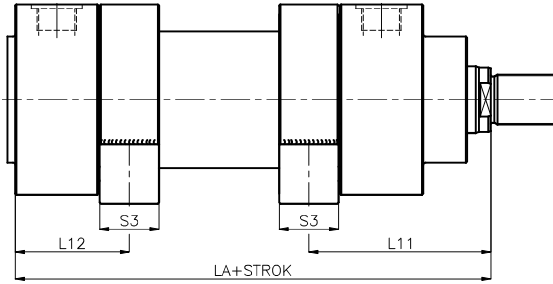
	øD0	D1	øD2	øD3	D4	D5	øD6	øD7	øD8	øD9	øD10	øD11	øD12	øD13	øD14	L1	L2	L3	L4	L5	L6	L7	L8
NHS-50	28	M20x1.5	60	60	110	G1/2"	11	126	150	60	25	25	25	11	30	28	14	24	20	20	5	18	20
NHS-63	36	M27x2	70	75	125	G3/4"	14	145	175	70	32	32	30	14	38	36	16	29	22.5	22.5	5	20	25
NHS-80	45	M33x2	85	95	135	G3/4"	18	165	200	85	40	40	40	18	47	45	18	36	25	25	5	22	32
NHS-100	56	M42x2	106	115	160	G1"	22	200	240	106	50	50	50	22	58	56	20	37	35	35	5	25	40
NHS-125	70	M48x2	132	145	195	G1"	22	235	280	132	63	63	60	25	70	63	23	37	37.5	37.5	5	28	50
NHS-160	90	M64x3	160	180	250	G1 1/4"	22	280	330	160	80	80	80	28	90	85	25	41	45	45	5	30	63
NHS-200	110	M80x3	200	230	310	G1 1/4"	26	340	390	200	100	100	100	36	110	95	30	45	55	55	5	35	80



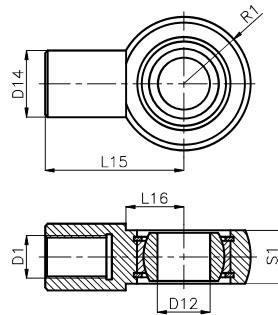
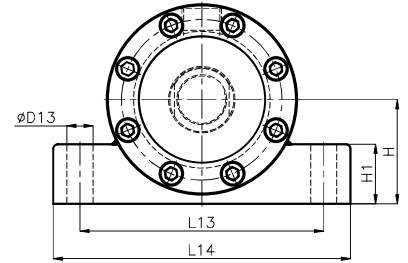
Arka eklem bağlantı
Rear swivel flange mounting



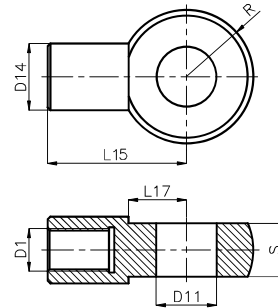
Küresel arka eklem bağlantı
Rear swivel flange mounting with spherical bearing



Ayak bağlantı
Foot mounting



Küresel ön eklem bağlantı
Piston rod mounting with spherical bearing



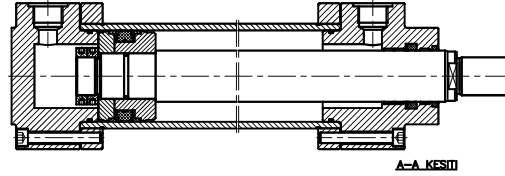
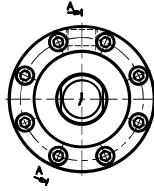
Ön eklem bağlantı
Piston rod swivel mounting

	L9	L10	L11	L12	L13	L14	L15	L16	L17	L18	LA	LB	LC	H	H1	R	R1	S	S1	S2	S3	S4	SW
NHS-50	120	32	94	56	130	155	65	25	20	15	205	225	257	60	30	25	30	25	25	20	30	39	22
NHS-63	140	40	106	61	150	180	80	36	32	20	224	249	289	67.5	35	35	35	32	30	25	30	48	30
NHS-80	150	50	125	71	170	210	97	39	34	27	250	282	332	72.5	40	40	45	40	35	32	40	55	36
NHS-100	176	63	153	96	205	250	120	46	41	27	300	332	395	87.5	50	50	55	50	40	32	50	59	46
NHS-125	210	71	163.5	103.5	255	305	140	52	49	27	325	357	428	114	60	60	65	63	50	32	55	75	60
NHS-160	275	90	192	126	330	400	180	67	67	31	370	406	505	142	70	80	85	80	60	36	70	95	75
NHS-200	320	112	223.5	148.5	385	465	210	86	86	35	450	490	615	175	85	100	105	100	74	40	75	120	100

TEKNİK ÖZELLİKLER / TECHNICAL SPECIFICATIONS

ÇALIŞMA BASINCI <i>Operating Pressure</i>	: 160 BAR, 250BAR (İSTEĞE BAĞLI) <i>(Optional)</i>	MAX. PİSTON HIZI <i>Max. Piston speed</i>	: 0.5 m/s
STANDART STROKLAR <i>Standard stroke</i>	: 100, 200, 300, 400, 500	ÇALIŞMA SICAKLIĞI <i>Operating temperature</i>	: Min.-20°C Max.+80°C
AKIŞKAN TÜRÜ <i>Fluid Type</i>	: MINERAL YAĞLAR <i>Mineral oils</i>	VİZKOZİTE / <i>Viscosity</i>	: 5 Cst - 300 Cst
SIZDIRMAZLIK ELEMANLARI <i>Seals</i>	: NBR + PU	SİLİNDİR BORUSU <i>Cylinder tube</i>	: St 52 BK + S HONLANMIŞ <i>St 52 BK + S Honed</i>
PİSTON MİLİ / <i>Piston rod</i>	: Ck 45 KROM KAPLI / <i>Ck 45 Chrome plated</i>		

NHS
(Norm Hidrolik Silindir)
(Norm Hydraulic Cylinder)



Ağırlık / Weight : (kg)

Silindir Çapı <i>Piston diameter</i> (Ø mm)	Strok=0 <i>At 0 Stroke</i> (kg)	Her 10 mm. strok için <i>Weight per</i> <i>10 mm. stroke</i>	ÖEBK	ÖEB	AEBK	AEB	AB	ÖFB	AFB	OEB
50	9.75	0.116	0.53	0.44	1.68	1.63	2.43	2.07	2.07	1.51
63	14.15	0.182	0.85	1.00	2.84	3.29	2.95	3.55	3.55	2.80
80	18.69	0.287	1.66	1.68	4.20	4.56	5.28	5.66	5.66	3.72
100	33.22	0.394	3.01	3.24	7.06	7.40	9.82	7.89	7.89	5.18
125	55.84	0.635	5.38	5.72	10.58	11.11	15.89	10.36	10.36	9.52
160	106.13	0.920	11.04	12.71	23.84	26.13	31.85	15.98	15.98	22.43
200	205.00	1.543	1.543	23.53	44.44	49.44	49.57	24.59	24.59	37.69