

# HİDROLİK SİLİNDİR (CETOP) HYDROLIC CYLINDER (CETOP)

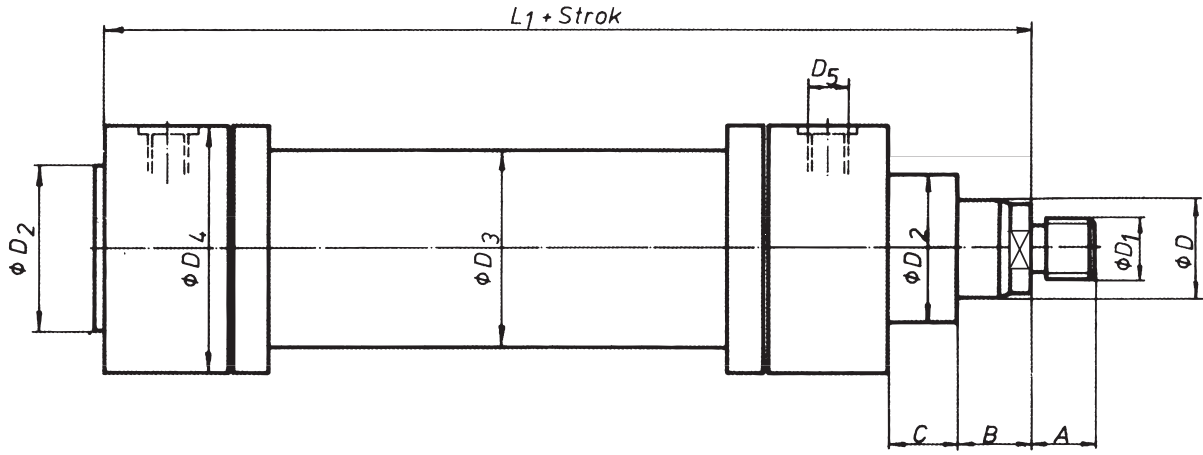
CYLINDERS SİLİNDİRLER



**(CETOP R58H STANDARDI)**  
**(R58H Standard)**

**NHS**

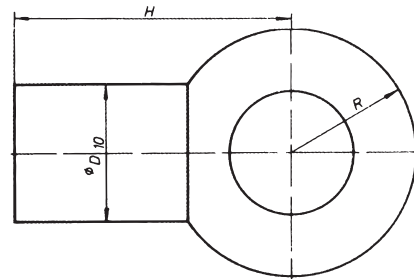
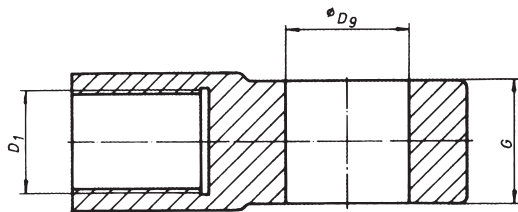
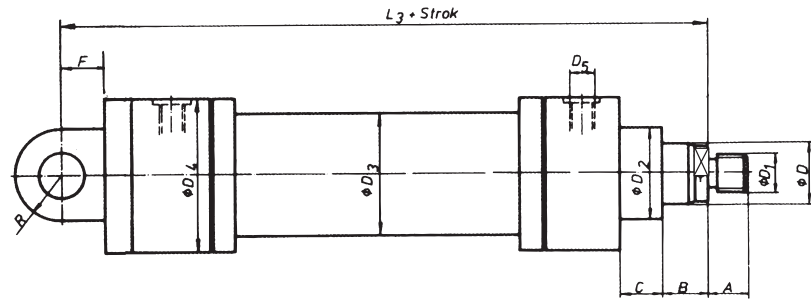
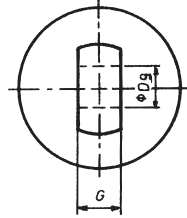
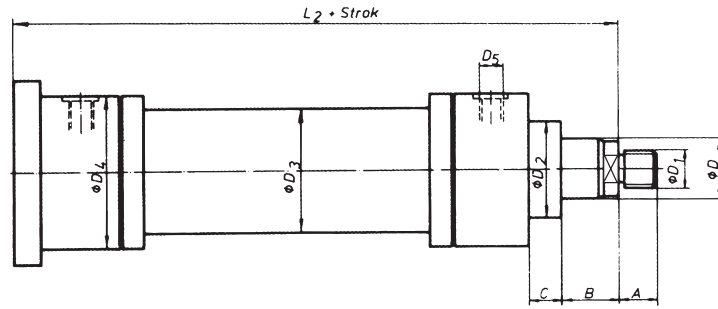
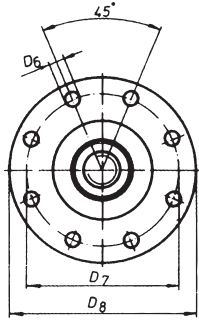
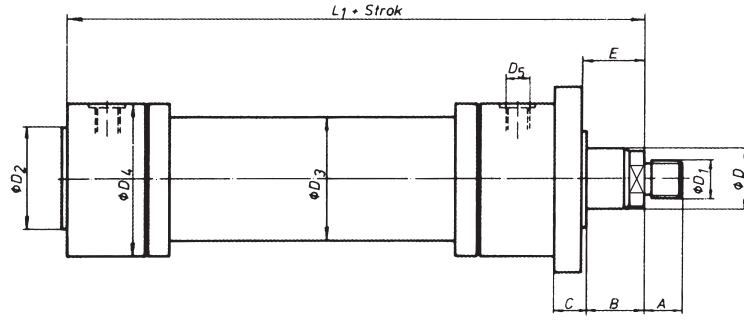
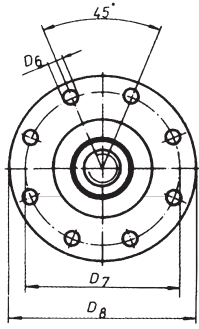
Silindir Çapı Ø Piston Diameter Ø	Standart Stroklar Standard Strokes mm	Bağlantı Şekilleri / Mountings			
50		ÖFB	Ön Flanş Bağlantı / Front flange mounting	RH	Piston Mili Sertleştirilmiş ve Krom Kaplı Hardened and chrome plated piston rod
63	100	AFB	Arka Flanş Bağlantı / Rear flange mounting	RS	Piston Mili Paslanmaz Stainless steel piston rod
80	200	AEB	Arka Eklem Bağlantı / Rear swivel flange mounting		Ck 45 Krom Kaplı Ck 45 chrome plated piston rod
100	300	AEBK	Küresel Arka Eklem Bağlantı Rear swivel flange mounting with spherical bearing		
125	400	ÖEB	Ön Eklem Bağlantı / Piston rod swivel mounting		
160	500	ÖEBK	Küresel Ön Eklem Bağlantı Piston rod swivel mounting with spherical bearing		
200		OEB	Orta Eklem Bağlantı / Central trunnion mounting		
		AB	Ayak Bağlantı / Foot mounting	SV	Nitril Sızdırmazlık Elemanı NBR Seal
					Viton Sızdırmazlık Elemanı Viton Seal



	A	B	C	ØD	D <sub>1</sub>	ØD <sub>2</sub>	ØD <sub>3</sub>	ØD <sub>4</sub>	D <sub>5</sub>	ØD <sub>6</sub>	ØD <sub>7</sub>
<b>NHS - 50</b>	28	14	24	28	M20X1,5	60	60	110	G 1/2"	11	126
<b>NHS - 63</b>	36	16	29	36	M27X2	70	75	125	G 3/4"	14	145
<b>NHS - 80</b>	45	18	36	45	M33X2	85	95	135	G 3/4"	18	165
<b>NHS - 100</b>	56	20	37	56	M42X2	106	115	160	G 1"	22	200
<b>NHS - 125</b>	63	23	37	70	M48X2	132	145	195	G 1"	22	235
<b>NHS - 160</b>	85	25	41	90	M64X3	160	180	250	G 1 1/4"	22	280
<b>NHS - 200</b>	95	30	45	110	M80X3	200	230	310	G 1 1/4"	26	340

	ØD <sub>8</sub>	ØD <sub>9</sub>	ØD <sub>10</sub>	E	F	G	H	L <sub>1</sub>	L <sub>2</sub>	L <sub>3</sub>	R	SW
<b>NHS - 50</b>	150	25	30	18	32	25	65	205	225	257	25	22
<b>NHS - 63</b>	175	32	38	20	40	32	80	224	249	289	35	30
<b>NHS - 80</b>	200	40	47	22	50	40	97	250	282	332	40	36
<b>NHS - 100</b>	240	50	58	25	63	50	120	300	332	395	50	46
<b>NHS - 125</b>	280	63	70	28	71	63	140	325	357	428	60	60
<b>NHS - 160</b>	330	80	90	30	90	80	180	370	406	505	80	75
<b>NHS - 200</b>	390	100	110	35	112	100	210	450	490	615	100	100

	İtme kuvveti / <i>Compression Force</i> : (daN)				Basınç / <i>Pressure</i> (bar)			
	20	40	60	80	100	120	140	160
<b>NHS - 50</b>	390	780	1170	1560	1950	2340	2730	3120
<b>NHS - 63</b>	620	1240	1860	2480	3100	3720	4340	4960
<b>NHS - 80</b>	1000	2000	3000	4000	5000	6000	7000	8000
<b>NHS - 100</b>	1550	3100	4650	6200	7750	9300	10850	12400
<b>NHS - 125</b>	2450	4900	7350	9800	11250	14700	17150	19600
<b>NHS - 160</b>	4000	8000	12000	16000	20000	24000	28000	32000
<b>NHS - 200</b>	6250	12500	18750	25000	31250	37500	43750	50000



## Ağırlık / Weight : (kg)

Silindir çapı	Strok=0 da	Her10mm. strok için	ÖEB	AEB	ÖFB	AFB
50	9.75	0.116	0.44	1.63	2.07	2.07
63	14.15	0.182	1.00	3.29	3.55	3.55
80	18.69	0.287	1.68	4.89	5.66	5.66
100	33.22	0.394	3.24	7.49	7.89	7.89
125	55.84	0.635	5.72	11.60	10.36	10.36
160	106.13	0.920	12.71	27.10	15.98	15.98
200	205.00	1.543	23.53	51.33	24.59	24.59

**TEKNİK ÖZELLİKLER / TECHNICAL SPECIFICATIONS**

Çalışma Basıncı / Max. Operating Pressure	: 160 bar
Piston Hızı / Max. Piston Speed	: 0,5 m/s
Çalışma Sıcaklığı / Temperature Range	: -20°C to 80°C
Yağ / Oil Type	: Mineral Yağlar / Mineral Oils
Viskozite / Viscosity	: 5 c St - 300 c St

**Piston kolu burkulma eğrisi**  
Piston rod buckling diagram