

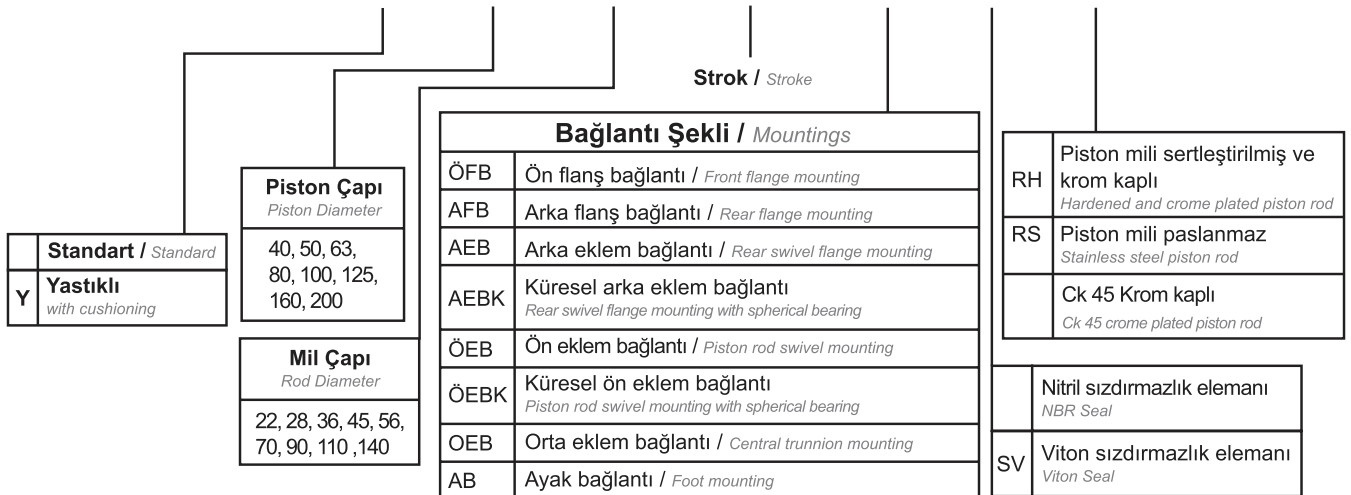
HİDROLİK SİLİNDİR (KOMPAKT)

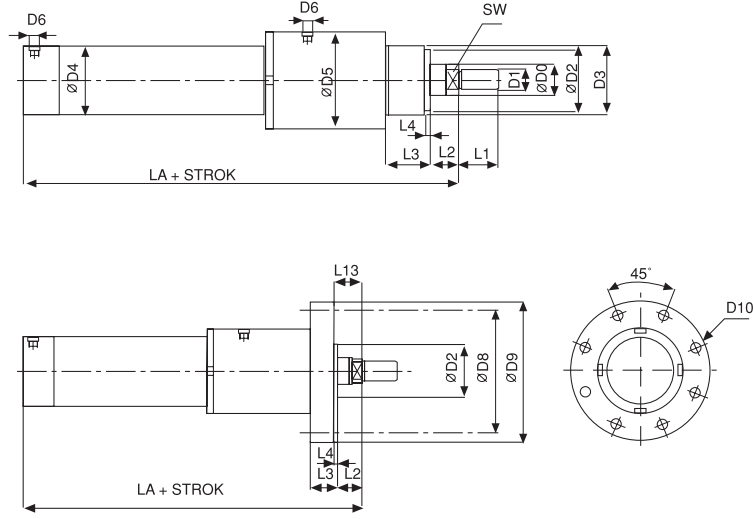
HYDROLIC CYLINDER (COMPACT)

CYLINDERS SİLİNDİRLER

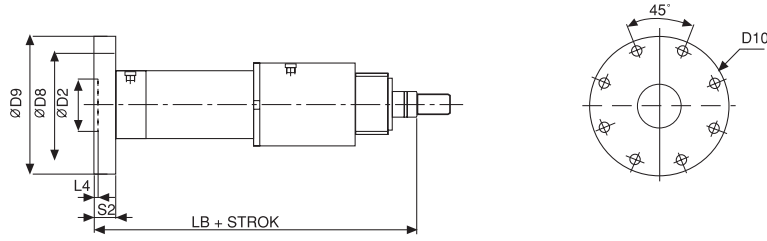


KHS - . - . . . / . . . - - -

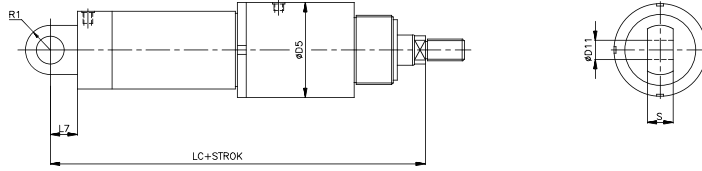




ÖN FLANŞ BAĞLANTI
Front flange mounting

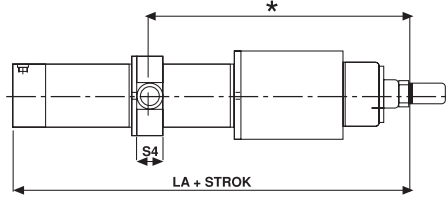


ARKA FLANŞ BAĞLANTI
Rear flange mounting

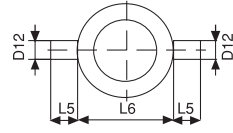


ARKA EKLEM BAĞLANTI
Rear swivel flange mounting

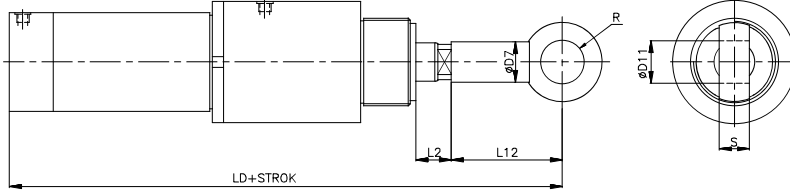
| | ØD0 | D1 | ØD2 | D3 | ØD4 | ØD5 | ØD6 | ØD7 | ØD8 | ØD9 | ØD10 | ØD11 | ØD12 | ØD13 | ØD14 | D15 | L1 | L2 | L3 | L4 | L5 |
|---------|-----|---------|-----|---------|-----|-----|----------|-----|-----|-----|------|------|------|------|------|---------|----|----|----|----|----|
| KHS-40 | 22 | M16x1,5 | 50 | M52x1,5 | 50 | 67 | G 3/8" | 25 | 106 | 125 | 9 | 20 | 20 | 11 | 20 | M16x1,5 | 22 | 13 | 19 | 3 | 16 |
| | 28 | | 60 | M62x1,5 | | | | | | | | | | | | | | | | | |
| KHS-50 | 28 | M20x1,5 | 60 | M62x1,5 | 60 | 78 | G 1/2" | 30 | 126 | 150 | 11 | 25 | 25 | 13 | 25 | M20x1,5 | 28 | 14 | 24 | 4 | 20 |
| | 36 | | 70 | M74x2 | | | | | | | | | | | | | | | | | |
| KHS-63 | 36 | M27x2 | 70 | M74x2 | 75 | 93 | G 3/4" | 38 | 145 | 175 | 14 | 32 | 32 | 13 | 30 | M27x2 | 36 | 16 | 29 | 4 | 25 |
| | 45 | | 85 | M90x2 | | | | | | | | | | | | | | | | | |
| KHS-80 | 45 | M33x2 | 85 | M90x2 | 95 | 113 | G 3/4" | 47 | 165 | 200 | 18 | 40 | 40 | 17 | 40 | M33x2 | 45 | 18 | 36 | 4 | 32 |
| | 56 | | 102 | M106x2 | | | | | | | | | | | | | | | | | |
| KHS-100 | 56 | M42x2 | 106 | M112x2 | 115 | 138 | G 1" | 58 | 200 | 240 | 22 | 50 | 50 | 21 | 50 | M42x2 | 56 | 20 | 37 | 5 | 40 |
| | 70 | | 120 | M125x3 | | | | | | | | | | | | | | | | | |
| KHS-125 | 70 | M48x2 | 132 | M136x3 | 145 | 173 | G 1" | 70 | 235 | 280 | 22 | 63 | 63 | 25 | 60 | M48x2 | 63 | 23 | 37 | 5 | 50 |
| | 90 | | 160 | M165x3 | | | | | | | | | | | | | | | | | |
| KHS-160 | 90 | M64x3 | 160 | M165x3 | 180 | 218 | G 1 1/4" | 90 | 280 | 330 | 22 | 80 | 80 | 30 | 80 | M64x3 | 85 | 25 | 41 | 5 | 63 |
| | 110 | | 190 | M200x3 | | | | | | | | | | | | | | | | | |
| KHS-200 | 110 | M80x3 | 200 | M210x3 | 230 | 265 | G 1 1/4" | 110 | 340 | 390 | 26 | 100 | 100 | 33 | 100 | M80x3 | 95 | 30 | 45 | 5 | 80 |
| | 140 | | 220 | M230x3 | | | | | | | | | | | | | | | | | |



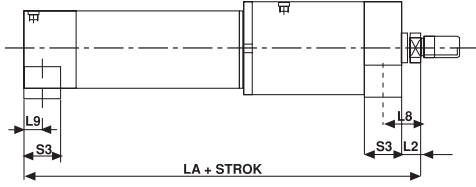
ORTA EKLEM BAĞLANTI
Trunnion mounting



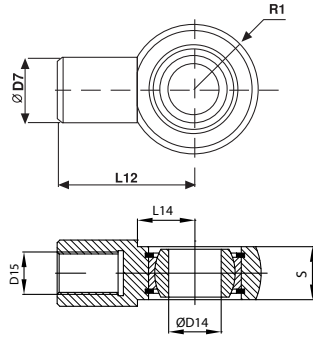
* Bu ölçü müşteri isteğine ve stroja bağlı olarak değişir.
* This dimension will change according to the stroke and customer needs.



ÖN EKLEM BAĞLANTI
Piston rod swivel mounting

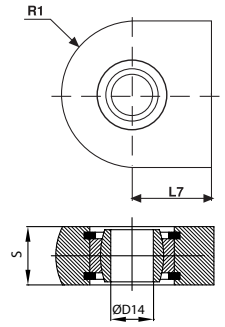


AYAK BAĞLANTI
Foot mounting



Küresel Ön Eklem Bağlantı

Piston rod swivel mounting with spherical bearing



Küresel Arka Eklem Bağlantı

Rear swivel flange mounting with spherical bearing

| | L6 | L7 | L8 | L9 | L10 | L11 | L12 | L13 | L14 | LA | LB | LC | LD | H | h1 | S | S1 | S2 | S3 | S4 | R | R1 | SW |
|----------------|-----|-----|------|------|-----|-----|-----|-----|-----|-----|-----|-----|-----|-----|----|-----|----|----|----|-----|-----|-----|------------|
| KHS-40 | 90 | 25 | 25,5 | 12,5 | 105 | 130 | 52 | 16 | 22 | 165 | 181 | 190 | 217 | 39 | 24 | 20 | 20 | 16 | 25 | 30 | 20 | 25 | 17 22 |
| KHS-50 | 105 | 32 | 29 | 15 | 125 | 155 | 65 | 18 | 25 | 183 | 203 | 215 | 248 | 45 | 28 | 25 | 25 | 20 | 30 | 35 | 25 | 30 | 22 30 |
| KHS-63 | 120 | 40 | 33,5 | 17,5 | 140 | 170 | 80 | 20 | 36 | 208 | 233 | 248 | 288 | 55 | 34 | 32 | 30 | 25 | 35 | 45 | 35 | 35 | 30 36 |
| KHS-80 | 135 | 50 | 38 | 20 | 175 | 215 | 97 | 22 | 39 | 221 | 253 | 271 | 318 | 65 | 38 | 40 | 35 | 32 | 40 | 55 | 40 | 45 | 36 46 |
| KHS-100 | 160 | 63 | 42,5 | 22,5 | 210 | 255 | 120 | 25 | 46 | 265 | 297 | 328 | 385 | 80 | 48 | 50 | 40 | 32 | 45 | 65 | 50 | 55 | 46 60 |
| KHS-125 | 195 | 71 | 50,5 | 27,5 | 250 | 300 | 140 | 28 | 52 | 285 | 317 | 356 | 425 | 100 | 58 | 63 | 50 | 32 | 55 | 80 | 60 | 65 | 60 75 |
| KHS-160 | 240 | 90 | 62,5 | 37,5 | 320 | 380 | 180 | 30 | 67 | 327 | 363 | 417 | 507 | 130 | 74 | 80 | 60 | 36 | 75 | 100 | 80 | 85 | 75 100 |
| KHS-200 | 295 | 112 | 77,5 | 47,5 | 380 | 460 | 210 | 35 | 86 | 399 | 439 | 511 | 609 | 160 | 90 | 100 | 74 | 40 | 95 | 115 | 100 | 105 | 100 120 |

TEKNİK ÖZELLİKLER / TECHNICAL SPECIFICATIONS

ÇALIŞMA BASINCI : 160 BAR, 250BAR (isteğe bağlı)
Operating Pressure (Optional)

STANDART STROKLAR : 50, 100, 160, 200,
Standard stroke 300, 400, 500

AKIŞKAN TÜRÜ : MINERAL YAĞLAR
Fluid Type : Mineral oils

SIZDIRMAZLIK ELEMANLARI : NBR + PU
Seals

PİSTON MİLİ / Piston rod : Çk 45 KROM KAPLI / Çk 45 Chrome plated

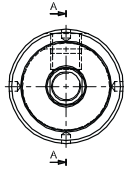
MAX. PİSTON HIZI : 0.5 m/s
Max. Piston speed

ÇALIŞMA SICAKLIĞI : Min.-20°C Max.+80°C
Operating temperature

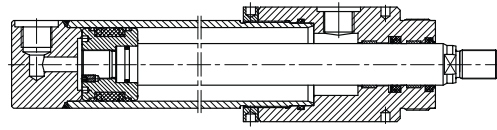
VİZKOZİTE / Viscosity : 5 Cst - 300 Cst

SİLİNDİR BORUSU : St 52 BK + S HONLANMIŞ
Cylinder tube : St 52 BK + Honed

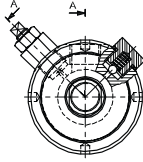
KHS
(Kompakt Hidrolik Silindir)
(Compact Hydraulic Cylinder)



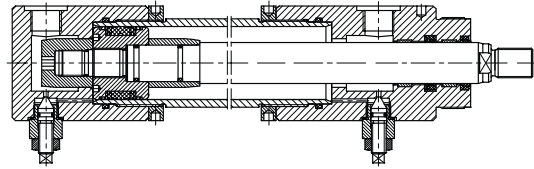
A-A KESİTİ / SECTION A-A



KHS - Y
(Kompakt Hidrolik Silindir Yastıklı)
(Compact Hydraulic Cylinder with cushioning)



A-A KESİTİ / SECTION A-A



Ağırlık / Weight : (kg)

| Silindir çapı | Strok d | Her10mm. strok için | ÖEBK | ÖEB | AEBK | AEB | AB (ÖN) | AB (ARKA) | ÖFB | AFB | OEB |
|---------------|---------|---------------------|-------|-------|-------|-------|---------|-----------|-------|-------|-------|
| 40 | 3.29 | 0.085 | 0.29 | 0.24 | 0.26 | 0.30 | 0.40 | 0.51 | 1.21 | 1.43 | 0.94 |
| 50 | 4.91 | 0.116 | 0.53 | 0.44 | 0.49 | 0.41 | 0.68 | 0.83 | 2.18 | 2.57 | 1.29 |
| 63 | 7.94 | 0.182 | 0.85 | 1.00 | 0.85 | 0.98 | 1.06 | 1.28 | 3.64 | 4.43 | 2.24 |
| 80 | 12.5 | 0.287 | 1.66 | 1.68 | 1.57 | 2.02 | 1.71 | 2.02 | 5.80 | 7.28 | 3.37 |
| 100 | 23.31 | 0.394 | 3.01 | 3.24 | 2.81 | 3.82 | 2.86 | 3.39 | 8.14 | 10.34 | 5.64 |
| 125 | 39.08 | 0.635 | 5.38 | 5.72 | 4.74 | 6.31 | 4.87 | 5.75 | 11.07 | 14.18 | 8.64 |
| 160 | 73.62 | 0.920 | 11.04 | 12.71 | 9.53 | 13.60 | 11.30 | 13.33 | 17.29 | 22.85 | 16.48 |
| 200 | 135.34 | 1.543 | 19.42 | 23.53 | 17.88 | 25.93 | 21.77 | 25.69 | 25.33 | 34.48 | 34.30 |